



# Red Cedar Lakes Association Spring 2015 Newsletter

## RCLA Board 2014–2015

### President / Officer:

Gerry Johnson 715-354-7061  
geraldjj@centurytel.net

### Vice President / Officer

**Membership Committee Chairperson:**  
Roger Menk 612-247-4591  
rsmenk@yahoo.com

### Treasurer / Officer:

John Page 651-208-2379  
john.page.rcl@gmail.com

### Secretary / Officer /

**Nature Committee Chairperson:**  
Valerie Bausch 651-337-2124  
vbausc@yahoo.com

### AIS Committee Co–Chairperson /

**Boater Safety Instructor:**  
Larry Johnson 715-354-3311  
lajohnson8015@centurytel.net

### AIS Committee Co–Chairperson:

Matt LaVick 715-205-6007  
mattlavick@gmail.com

### Boater Safety &

**Bouy Committee Chairperson:**  
David Voller 507 250-1591  
voller.david@mayo.edu

### Coupon Book Committee Chairperson:

Larry Quillen 715-234-2833  
quillens@skcable.com

### Fish Habitat Committee Chairperson:

Dave Peters 715-307-2407  
david@lakeplace.com

### Landing Kiosks /

**Signage Committee Chairperson:**  
Chuck Evitch 715-651-0285  
charlesrevitch@gmail.com

### Newsletter &

**Website Committee Chairperson:**  
McKensy Voller ###-###-####  
vollerm4515@my.uwstout.edu

### Shoreline & Island Restoration

**Committee Chairperson:**  
Rich Hokanson 715-354-3912  
rich@cpinternet.com

**VISIT US AT**  
**redcedarlakes.com**

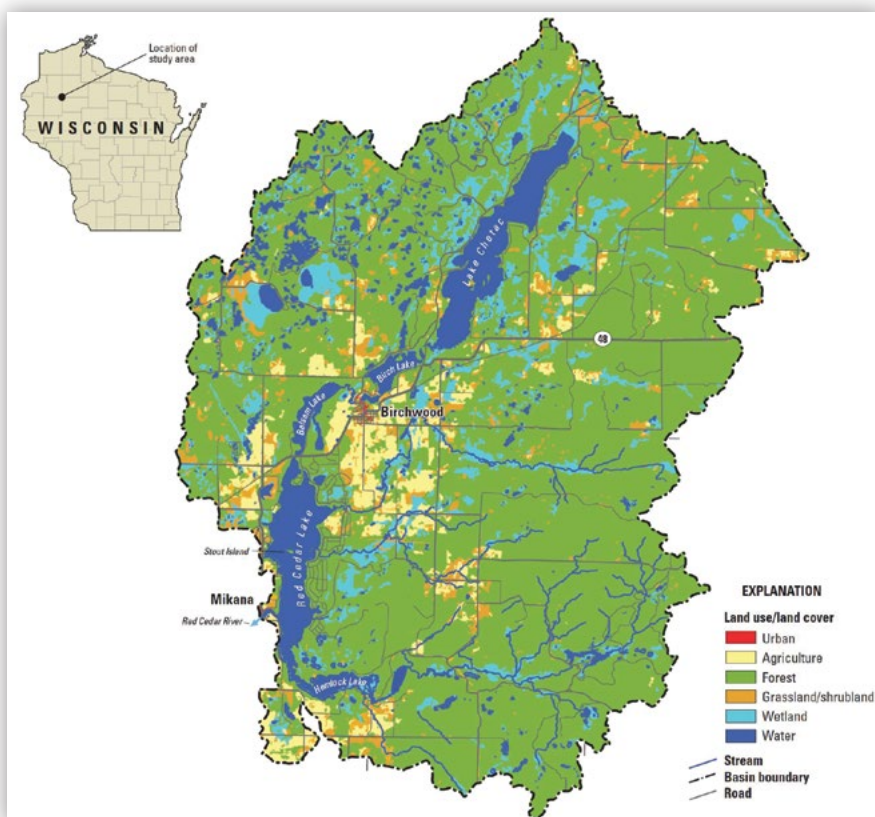
## President's Letter

### *Phosphorus Progress Encouraging in the Northern Watershed*

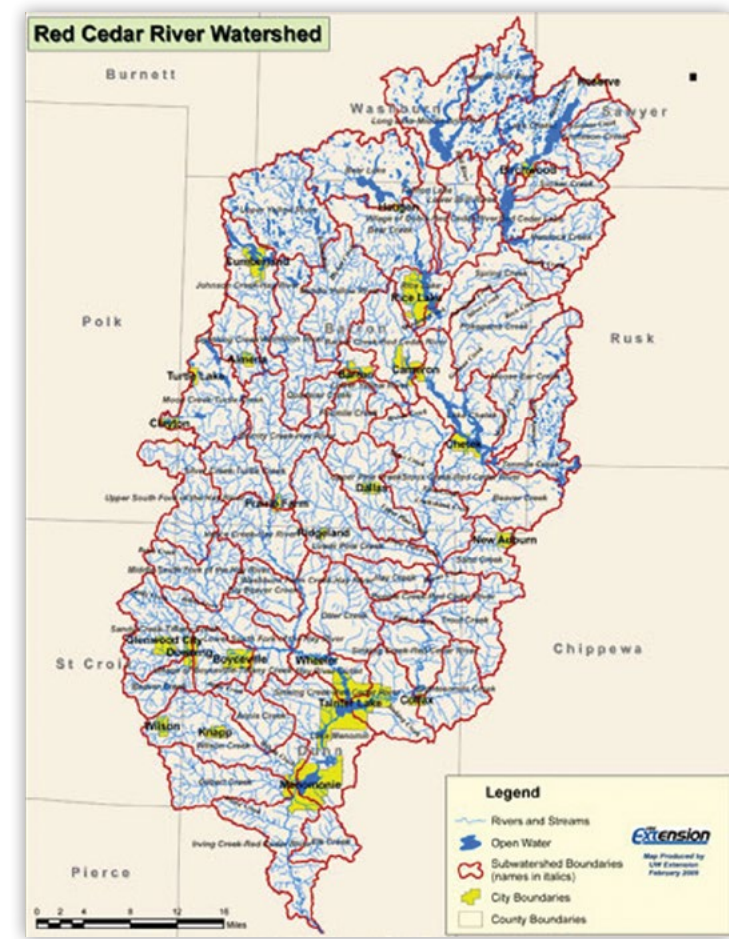
What began in the summer/fall of 2012 is now beginning to show preliminary signs of improvement in water quality in the northern part of the Red Cedar Lake Watershed (RCLW), albeit primarily visual and lacking concrete numbers at this point in the process.

Previous research and grants identified aquatic invasive species (AIS) as one of the leading sources of phosphorous in the northern part of the watershed, which decreases water quality and produces blue & green algae. Curley Leaf Pondweed (CLP) is an AIS which produces turions that drop, multiply and create phosphorous in our lakes, thereby degrading our water quality.

In August, 2012 an RCLA-sponsored roundtable entitled "Controlling AIS", six lake professionals and experts from numerous organizations presented information on AIS identification, control and treatment in the northern waters of the watershed. The biggest takeaway came from the USGS report which reported 39% of the annual phosphorous input loading in







Balsam, Mud, Red Cedar and Hemlock Lakes is coming from Big Chetac and Birch Lakes. Further, the 39% represents by far the largest input, with the next closest at 16%.

To put things in perspective, a large source of phosphorous in Big Chetac is the result of over 600 acres of CLP, which compares to under 50 acres of higher density CLP in Balsam, Mud, Red Cedar and Hemlock Lakes.

Following this meeting, a joint meeting with the Red Cedar Lake Association (RCLA), Big Chetac & Birch Lakes Association (BC&BLA) and DNR Lake Management Coordinator Alex Smith was organized to discuss numerous ideas on how we can best work together to attack CLP and reduce phosphorous, including creating a larger footprint to attack this issue through joint grants and funding. In the end, the DNR recommended both lake associations pursue their own grant, but work together on best practices, information sharing and joint meetings as needed.

While a broader watershed effort is underway to write a plan for submission and approval to the Federal Environmental Protection Agency (EPA) to address federal and state water quality standards for the entire watershed, RCLA and BC&BLA independently submitted and gained approval for implementing 3-year (2013-15) DNR grants to proactively locate, treat and aggressively reduce CLP in the northern watershed. RCLA's AIS grant efforts and results to date have been well documented and communicated in this and previous newsletters by AIS Co-Committee Chairmen Larry Johnson and Matt LaVick. A hearty thank you goes out to all of our volunteers that donate their time and effort to implement the many required tasks within the grant.

This background leads me to BC&BLA, and what a fantastic job President Bill Miller and his team are doing to address Big Chetac's CLP issue.

Following the recommendations of the DNR, BC&BLA treated 90 acres of CLP in 2013 and 2014. Due to favorable weather conditions, drift and the topography of the lake, the effort successfully treated nearly all of the 600 acres, effectively controlling CLP growth in a large part of the north end of the lake. Also, native plants returned to the areas where CLP once was. Their grant provides for treatments of CLP again in 2015, as a minimum of three years of treatment in an area is necessary because of the way the plant reproduces. Just like RCLA's grant.

Further, the DNR conducted a detail fish study to determine if there have been any negative results to the fishing habitat or the fish as a result of CLP treatment in the treated areas of Big Chetac.. No adverse effects were found. In fact, fish were netted in the north end of the lake in larger quantities than in other areas of the lake.

“We won’t have true phosphorus readings yet, because we have to treat one more year to get accurate pre-treatment and post-treatment readings to determine the phosphorous reduction levels,” said Miller.”But the visual impact showed a noticeable improvement in water quality and significant less algae bloom last summer than in previous summers. Quite frankly, we couldn’t be happier with the result so far.”

Interestingly enough, our RCLA volunteers also noticed and heard many comments from lake owners on the

improvement in water quality on our lakes as well. Just like Big Chetac, RCLA will have scientific results later this year following this spring's treatment on Red Cedar and Hemlock lakes. While the jury is still out, signs are definitely pointing in the right direction.

Congratulations to BC&BLA on leading the fight in the watershed’s most northern lake. RCLA looks forward to continuing our strong relationship and collaboration efforts with Bill and his team to achieve our mutual goal of continuous water quality improvement in the northern section of the Red Cedar Watershed..

**Gerry Johnson**  
*President*

## McKensy Voller Appointed to Board

McKensy Voller was voted by the RCLA Board of Directors to fill the remainder of the vacated term of Peg Pieters as Director of the Newsletter and Website Committee on Feb. 11, 2015. The vote was 10-0, with Director David Voller abstaining due to perceived conflict of interest.

As many of you know, Peg suffered an aneurysm last winter and underwent successful surgery at the University of Wisconsin Hospital in Madison. During 2014 following surgery, Peg was focused on an aggressive rehabilitation program with the strong support of her husband, Joe. Many of you also know Joe, who past Treasurer of RCLA. Both have dedicated countless hours, hard work and contributions to RCLA. Peg decided this past fall not to fulfill the remaining six months of her two-year term and instead allocate her full energy on her continuing rehabilitation program.

Our prayers and thoughts will continue to go out to Peg for a full recovery and a return to normalcy in her life. On behalf of the entire Board and RCLA membership, I want to thank both Peg and Joe for their efforts on the lake association and to let you know your smiling faces will be missed by us all.

The Newsletter and Website Committee is a very important committee on the Board, as these vehicles communicate

### Simple Steps to Protect Your Waterfront Investment

**Step #1:** Choose zero-phosphorus fertilizer for your lawn and garden.

**Step #2:** Properly dispose of household hazardous waste, or better yet, minimize your use of toxic products.

**Step #3:** Minimize erosion by leaving the natural shoreline intact.

**Step #4:** Inspect and maintain your septic system regularly.

**Step #5:** Reduce the hard surfaces like rooftops and driveways on your property.

**Step #6:** Plant trees and shrubs to protect your land and lakeshore. (See page 3 of this issue for ideas.)

**Step #7:** Direct downspouts onto your lawn or landscaping, not onto hard surfaces.

**Step #8:** Install a rain barrel.

**Step #9:** Build a rain garden.

**Step #10:** Protect or restore your shoreland buffer.

Protecting Your Waterfront Investment  
10 Simple Shoreland Stewardship Practices

For more detailed information on these steps, go to our bookstore and get the full publication *Protecting Your Waterfront Investment: 10 Simple Shoreland Stewardship Practices*.

[www.uwsp.edu/uwexplakes](http://www.uwsp.edu/uwexplakes)

the key informational and educational information to our membership. The Board is extremely excited to welcome McKensy and congratulate her on her new assignment.

She is currently a junior at UW-Stout, studying Business and Supply Chain Management. McKensy has taken classes in writing, computer website layout/design and information communication technology. In addition, she has commercial work experience helping to develop computer software programs for Mills Fleet Farm HR Dept. in Menomonie.

As the daughter of David and Kristi Voller, she has knowledge of our lakes and organization, as she is a frequent visitor to the family lake home on Red Cedar and has attending RCLA meetings. McKensy is a vibrant, energetic and enthusiastic person who has the desire, time and knowledge to maintain and improve our communication vehicles. She will serve out Peg’s term through July and then volunteer for a new two -year term. After graduation, her goal is to land employment in the area, allowing her to continue her volunteerism with RCLA.

Welcome, McKensy, and thank you for volunteering.

**Gerry Johnson**  
*RCLA President*



Aquatic Invasive Species Committee

Greetings from your AIS (Aquatic Invasive Species) Committee!! All your hard work and significant volunteer hours continued in 2014 as we completed tasks on our 2013-2015 DNR Grant which includes the control of our invasive plant called curly-leaf pondweed (CLP)!! A hearty “THANK YOU” to each of you as RCLA members, lake shore owners, and concerned citizens who have volunteered. We continue to be gratified with the ‘sense of community” that is present around our three lake system.

During 2014, your volunteers contributed a total of 1,424 hours, of their personal time at the lake, to assist us in water quality sampling/testing, boat landing monitoring, purple loosestrife control, AIS plant/animal monitoring out on the lake, bed mapping of CLP and wild rice, CLP manual pulling, AIS education, and CLP herbicide control. Our grant also included, in exchange for our volunteer hours, the DNR would assist with cash reimbursements for the expenses to accomplish these tasks. The total dollars reimbursed to us in 2014 equaled \$25,567.05 from the DNR - Thanks.

Now for the update on our 2014 activities!! We will continue to need volunteers to complete the various tasks in 2015 that were done in 2014 listed above. In order to be effective in the control of CLP, we need to replicate our activities in the same areas for three years in a row. As a result, the third year of herbicide treatments will be completed this spring.

Where will the treatment occur? The Curly Leaf Pondweed areas to be treated are on the South end of Red Cedar and the West end of Hemlock. With the reduced snow cover this past winter, warmer winter weather, and earlier ice out than normal, we are anticipating curly-leaf pondweed germination and growth to be more robust this spring.

When will this happen? The application process will occur between April 21 and May 17, or when the water temp is between 50-60 degrees.

Other tasks we will be completing, with volunteer hours, include: Monitoring our boat landings, in partnership with our many Boy Scouts in the area, for the Clean Boats Clean Waters Program, and On-the-water AIS monitoring by cruising the shoreline looking for presence of any

invasive species. We will also be doing water quality testing on all three lakes, bed mapping and hand pulling curly leaf pondweed in partnership with the Birchwood High School Conservation Club. Below is Cheyenne Okey, Paul Manka, Robert Darling, and Liam Harrington hand pulling curly leaf pondweed on Balsam Lake's northeast end during the summer of 2014.



We thought you’d have interest in a few statistics that have been compiled by our water quality volunteers on our three lakes. This data and much more, can be found on [www.dnr.wi.gov](http://www.dnr.wi.gov). Once on this site, type in the search box” lakes”, and look for Water Quality, or AIS, or Clean Boats Clean Waters, or Citizens Lake Monitoring Network. Each of these links has specific data related to each of our three lakes. We’d invite you to take the time to review the data when you have a chance, and get a feeling of the comprehensive efforts your Red Cedar Lakes Association volunteers have completed.

The table on the following page is divided into two sets of data for our three lakes. On the left, is the secci disc readings which reports the water clarity in each of the months (the larger the number, the further down into the water we can see the disc). A secci disc is a circular-one foot in diameter disc, painted in shapes of a slice of pie, with alternating colors of black and white. We lower it into the water on the shady side of the boat until we can’t see the disc. This procedure gets us the water clarity

Red Cedar Secci Disc Readings in Feet					
	May	June	July	Aug	Sep
2014	11.4	11.75	8.1	9.6	6.5
2013	9.25	17	11.6	11.6	
2012	14.6	9.6	5.75	6.1	5.9
2011		10.25	8	7.1	5.6
2010	7.5	11.25	8	6	6.5

Hemlock Secci Disc Readings in Feet					
	May	June	July	Aug	Sep
2014	4.5	4.5	5.25	7.25	
2013	5.25	6.5	2.5	4.5	5.5
2012	6	6	3	3.75	5.5
2011	7	6.5	4.9	4.25	4

Balsam Secci Disc Readings in Feet					
	May	June	July	Aug	Sep
2014	6.75	8.9	8.4	9.1	
2013		8.5	7.75	10	12
2012	9.5	4	6	7	8
2011		8.5	7.5	4	5.25

reading. On the right, we find the total phosphorus readings (the higher the number, the more phosphorus in the water, which contributes to algae blooms, and green matter forming in the water). Phosphorus levels that are not controlled, will quickly create significant water quality degradation and affects water quality to all who are down steam in a watershed. RCLA is researching a potential effort, to better define our current phosphorus levels and sources, determining lower future target levels, and establishing tasks and timetables to get there.

A few of our conclusions are:

1. You can see the effect on water clarity with Balsam Lake having the Big Chetac chain of lakes flowage and Hemlock Lake having the Murphy flowage. Red Cedar is significantly higher. The same can be said of phosphorus, with Red Cedar being significantly lower than the other two. Hemlock Lake is also significantly “not as deep” as the other two lakes so that seems to affect these readings as well.
2. 2012 was a tough year in the statistics in both water clarity and phosphorus. We like our trends, from 2012 to 2014, these numbers show in both categories.
3. We would like to believe our hand pulling of curly leaf pondweed and the herbicide treatments have made a

Total Phosphorus in parts per billion				
	May	June	July	Aug
2014	44.7	18.7	19.7	18.8
2013	29	18.6	15.1	24.7
2012	23	24	29	21
2011		22	20	24
2010	16	18	14	21

Total Phosphorus in parts per billion				
	May	June	July	Aug
2014	40.2	45.1	24.8	27.5
2013	36.7	25.8	26.8	25.2

Total Phosphorus in parts per billion				
	May	June	July	Aug
2014	57.7	32	22.5	23.9
2013	49.8	36.3	22.5	17.4

positive difference. Bed mapping of curly leaf pondweed will again be done, in all three lakes this spring, to see if we can verify this conclusion.

4. Red Cedar has had volunteers doing full water quality sampling and testing for many years, thus you see the phosphorus statistics for each of the five years. Hemlock and Balsam Lakes began that volunteer effort in 2013.

5. Another statistic we are happy to report, which would be found under the heading of Citizen Lake Monitoring Network on the DNR website, is the work our AIS Monitor Volunteers have done in cruising the three lakes, with a rake in hand, looking for other AIS. We can report these

volunteers have not found any Eurasian water milfoil, or zebra mussels yet. We say it this way, since many lakes surrounding us have these invasive species and the Boy Scouts that monitor our boat landings will report - boats have been on these waters before entering our three lakes.

Red Cedar Lakes Association, continue our “call to action” request, to each of you, for volunteer hours. Our commitment to continue protecting, preserving, and improving our great natural resource-Red Cedar Chain of Lakes-is unwavering. We have made a difference yesterday, we feel our volunteers continue committed today, and we are excited to continue the partnership between all these stakeholders: the DNR, you as a valued volunteer, your RCLA Board, and your AIS Committee into the future.

Please contact us on your volunteer interests!! Enjoy the lake this boating/fishing season!!

Larry Johnson

Matt LaVick

AIS Committee Co-Chairpersons



## Nature Committee

Wow, what a difference a year makes ... last year at the beginning of April we were still buried in snow with a foot of ice still on the lakes wondering if winter will ever end and this year people are already getting their docks and boats ready for another fun summer season on the Red Cedar Lakes. With the first sign of Spring in the air, the Nature Committee started planning their annual activities. For the third straight year, the Nature Committee will be sponsoring an educational nature program you will not want to miss. On June 6, we have Chris Cold from the WDNR presenting "Extinction ... and the future of Wildlife". Chris will not only have a few fossil artifacts and replicas to share, but will also bring a few live animals (hawk, owl, turtle, snake) so you will get a chance to see them up close. This program is free, perfect for the whole family and will start at 10 a.m. at the Loch Lomond Beach Club.

The Nature Committee will continue to participate in the WI LoonWatch Program, which helps protect common loons and their aquatic habitats through education, monitoring, and research. We will also be participating in the 2015 WI Loon Population Survey on July 18 on Red Cedar Lake. This "one day" survey has been conducted every five years since 1985 on over 250 pre-selected lakes throughout northern Wisconsin. This survey is vital to assessing the effectiveness of current conservation efforts with the loon population. During the hours of 5 a.m. and 10 a.m., the Nature Committee will be recording the number of adult loons and loon chicks and sending our results to the WI

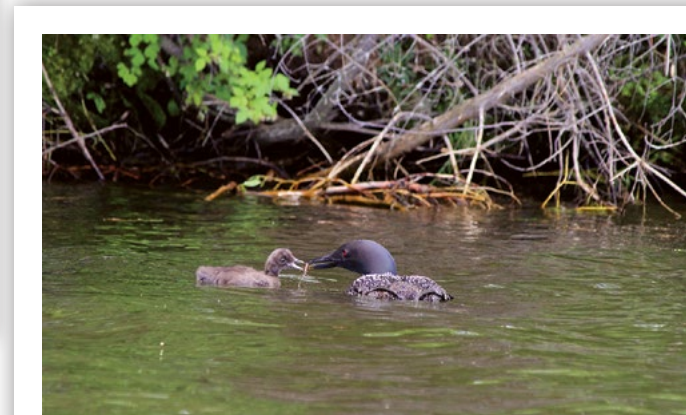


LoonWatch Program. We would like to remind everyone the importance of using "lead free" sinkers and to pay close attention to our loons when you are out boating or fishing. Last year Dave Peters and Kernon Bast rescued a loon that was tangled in a fishing bobber and hook. We were very lucky that the loon was able to recover with the help of REGI (Raptor Educational Group, Inc.), flown down to Florida on a private jet and set free ... we might not be as lucky this next time.

Other activities we have planned is mapping the wild rice between Balsam and Mud Lake, expand our "dark skies" program to educate people on reducing bright lights on our lakes, lead the Tree Planting Program and monitor the Bald Eagle nests. This year, we had approximately 30 people order 450 trees as part of the Tree Planting Program ... thank you for giving back to our environment!!

The Nature Committee currently has 6 active members, but we are always looking for more volunteers to help promote our vision and make the Red Cedar Lakes a safe refuge for wildlife. If you would like to be a part of this great committee or you would like to join us at our next meeting to learn more about our 2015 activities, please contact Valerie Bausch (Chairperson) at [vbausc@yahoo.com](mailto:vbausc@yahoo.com).

**Valerie Bausch**  
**Nature Committee Chairperson**



## EXTINCTION ... and the Future of Wildlife Presentation

The Red Cedar Lakes Association Nature Committee is excited to host Chris Cold, WI DNR Wildlife Technician and Educator, for its third annual wildlife educational program Sat., June 6, 2015, at 10 a.m. at the Loch Lomond Beach Club in



Birchwood, WI. If you loved his presentation last year, you will be just as impressed with this year's presentation, "Extinction ... and the Future of Wildlife." Chris will describe the historical rise and fall of animal populations and provide suggestions on how we can manage and maintain wildlife into the future. This free, interactive program is perfect for all ages and will include fossil artifacts, replicas and a live critter or two. If you want to get up close with species right in our own backyard (hawk, owl, turtle and snake), you won't want to miss it!

A special thanks to the Loch Lomond Beach Club for hosting this event.

**Valerie Bausch**  
**Nature Committee Chairperson**

## Fish Habitat Committee

There were (2) Fish Habitat Structures installed on the ice March 14th, 2015 on Red Cedar Lake. Each structure is comprised of (7) 35 foot long trees. The structures are located on the east side of Stout Island Peninsula. The Tamarack trees were harvested from the Dave & Mary Helen Drew property north of Mikana. Dave & Mary Helen own Seasonal Power Toys in Birchwood. They were cut by Mike Severson Logging. They were moved out of the swamp by Matt Lavick, Dave Peters and Don Bergstrom. The trees were then crane loaded onto a semi by Peterson Tree Cutting Service and brought to the Cty V landing and placed on the ice for moving to the site. Weegman Landscape furnished the rock filled burlap bags for the weight necessary to submerge the trees. The trees were positioned, cabled to the

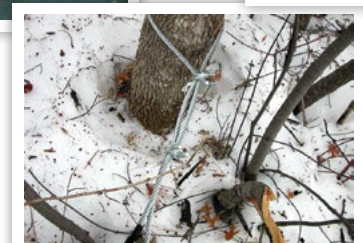
shoreline to secure them and weighted for submergence. On our Red Cedar Lake Fish Sticks workday Matt Lavick, Mel Landwehr and Dave Peters completed the structures.

The structures are designed to provide young fish an area to hide from predators and to provide fish a rich food source. Many snails, crustaceans and micro organisms grow on the bark giving fish this wealthy food source.

Stay safe and Happy Fishing!

Respectfully submitted,

**Dave Peters**  
**Fish Habitat Committee**





## Boater Safety and Marker Committee

Hello lake friends!

As I pondered what to write this year for the newsletter I was a little challenged to ensure I did not write what I have written before or with this particular subject, Boater Safety and Markers, get too preachy. However, after some thought and recalling a conversation I had this last fall with some RCLA members an idea came about on how each of us has an opportunity to be greater stewards of our lakes.

We know there is only so much resource to go around. Guys like Russ Fell and Dave Moin and their staff are limited to how often they can patrol our lakes so they look to the public to be an extension of their eyes when things seem a little fishy or rules are being stretched. This can be from anglers catching in excess of their daily limits, boaters edging the crest of the no wake zones or those who fail to recognize that not cleaning off their boat at the landings can result in a fine.

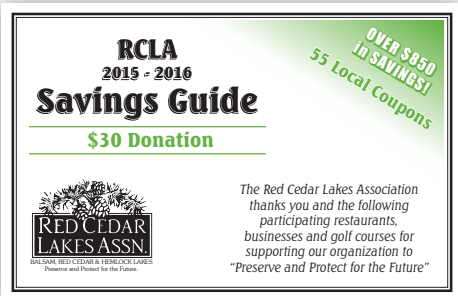
I know none of us want to be “that guy” who self-enforces the laws but each of us can help support the laws to be enforced, anonymously. When observing such violations here is what law enforcement services ask you to provide.

- Who is the violator? Describe the people, including their physical description and clothing, get the boats registration numbers, make/type of boat
- What is the violation?
- Where did this violation take place? (county, township, road/highway, body of water)
- When did this occur or is this an in progress violation?

## Coupon Book Committee

The 2015/2016 Coupon Books are at the printer and should be out the first part of May. Carol and I would like to thank all the businesses for their continued support and welcome the new participants to our book. It is your support that continues to help the RCLA protect and preserve our lakes in the area.

Several businesses have offered to sell our books as well. This generates additional income



Sadly it does not matter how many ‘No Wake’ signs you post or laws published there are individuals who are likely going to have disregard for them anyway. By calling in these situations to law enforcement agents they can build an appropriate case to act accordingly.



### Who to call...

- Barron County Sheriff - (715) 537-3106 or if an emergency 911
- WI DNR - 1 (800) TIP-WDNR or (800) 847-9396

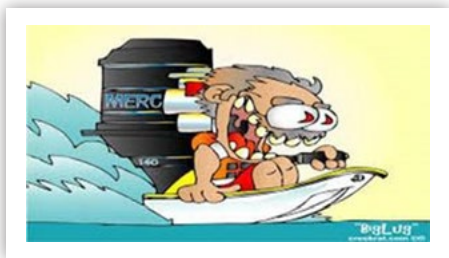
Here is to another summer of having fun, being safe and respecting each other on the water!

Your Boater Safety and Marker Committee

**David Voller, Chair**

**Roger Menk**

**Larry Johnson**



for the association and gets more books into the hands of folks in our area. If you would like to help sell our coupon books, contact Larry or Carol at Quillen’s in Mikana.

Thank you again to all the members of RCLA that purchased a book last year. Carol and I hope we can count on your support again this year.

Members should be receiving their books in the mail by May 9.

**Larry and Carol Quillen**

**Coupon Book Committee**

## Boater Safety Course Offered 2015

Classes will be held at the Birchwood High School on June 29th-July 2, 2015. Classes each day will be from 9:00 am to noon. The in-water instruction will take place on Red Cedar Lake. Cost is \$10.00 per student. Co-sponsored by Red Cedar Lakes Association and Loch Lomond Beach Club.

### WHAT ARE THE RULES and WHO SHOULD ATTEND??

#### Motorboats (Other Than a Personal Watercraft)

- A person under the age of 10 may not operate a motorboat.
- A person 10 or 11 years old may operate a motorboat only if accompanied by a parent, a guardian, or a person at least 18 years old who is designated by the parent or guardian.
- A person 12-15 years old may operate a motorboat only if:
  - He or she is accompanied by a parent, a guardian, or a person at least 18 years old who is designated by the parent or guardian or....
  - He or she has completed a boating safety course that is accepted by the Wisconsin DNR.
- A person born on or after January 1, 1999, and at least 16 years old may operated a motorboat only if he or she has completed a boating safety course that is accepted by the Wisconsin DNR.

This course consists of nine hours of classroom instruction and an “on-the-water” boat operation segment. If interested, please call Larry Johnson, DNR Certified Boating Safety Instructor at 715.354.3311

**Attendance is mandatory at all sessions.**

## Membership Committee

I hope you all had a great winter and that you are anticipating another great year on our wonderful chain of lakes. My wife, Kathy, and I made our annual pilgrimage south for a few weeks, but it is always nice to get home and enjoy the four seasons of Wisconsin! As I write this article, I can sense the excitement of those planning for the fishing opener. As opposed to the last two years, we will actually be able to use our boats without the fear of dodging chunks of ice.

As of April 10th, 565 members have paid their membership dues for 2015. That is exactly the same number of memberships when I wrote this article last year and down from 574 at this time two years ago. As a means of comparison, we had 606 members at the end of last year. Of the 565, fifteen are new members to our organization. Thanks to those of you who have renewed your membership for 2015, and a special thanks to our newest members. Based on the activities you will read



#### Personal Watercraft (PWC)

- A person under the age of 12 may not operate a PWC.
- A person 12-15 years old may operate a PWC only if he or she has completed a boating safety course that is accepted by the Wisconsin DNR. (Parental supervision is not a substitute for a boating safety course certificate as with other motorboats.)
- A person born on or after January 1, 1989, and at least 16 years old may operate a PWC only if he or she has completed a boating safety course that is accepted by the Wisconsin DNR.
- A person under 16 years old may not rent or lease a PWC

about in this newsletter, you can see that there are always opportunities to become involved in our projects and on our committees. Please reach out to our committee chairs if you are interested in becoming more involved.

Each of you received our newest membership brochure in the renewal mailing we sent you last November. We hope you use it to reach out to potential new members. If you have misplaced it, please let me know and I will send you another (or multiples if you desire). As always, I am available to contact potential new members if you prefer. Just get me a name and contact information (mailing or e-mail address or phone number), and I will contact them directly. My e-mail address is rsmenk@yahoo.com. We’ll see you on the lakes!

**Roger Menk**

**Membership Committee Chairperson**

**Volunteers Needed**

***WANTED:***

**Volunteers to enjoy a cup of coffee**

In the morning as you gaze out the window, sipping on the first cup of coffee, you are most likely thinking what a great lake you chose to be a part of. You can now help the Lake Assn. with your PJ's on at your kitchen table! Your Lake Assn. is looking for a few people to view the footage on the camera at the Waldo Carlson Campgrounds. (Barron County Park). Some of the events recorded are. Watching a truck go in the lake, trying to launch a boat, and funny things people do. You will see things you will remember

forever. Most videos are only a couple of minutes long. The time you spend watching the videos can turn into dollars for our Lake Assn.

If you would like to enjoy the boat landing antics please contact Matt LaVick at mattlavick@gmail.com or 715-205-6007 for information.

***Roger Menk***  
***Membership Committee Chairperson***

**Shoreline & Island Restoration Committee**

***Island Restoration Update***

The current focus is the lake island close to the Waldo Carlson county park. It has suffered much erosion during the last 10 years or so. The WI DNR has issued a permit to proceed with "limited" riprap and work began last August. About 75% of the riprap was completed before "winter" set in. The remaining work will be completed by mid-July. Work cannot start until mid-June so as not to disturb the walleye spawn.

In the meantime work will continue this spring to get grass and other plant material to grow to help with erosion. The island is basically a big sand pile and erodes easily. This island restoration is an attempt to stop this erosion trend.

***Rich Hokanson***  
***Island Restoration Chairperson***

**Shoreline & Island Restoration Committee**

***Lakeshore Restoration/Maintenance***

This is the time of year when we want to get outside and enjoy our Lakes. Many of us have projects in mind or planed that will improve our properties. These projects should include efforts to reduce the effects of rain/snow runoff into the streams, ponds, lakes adjoining our property. Please know that there is much information available to help you accomplish this goal. A good place to start is the web site for "Lake Tides" ([www.uwsp.edu/uwexplakes](http://www.uwsp.edu/uwexplakes)). Lake Tides is a quarterly publication of the Wisconsin Lakes Partnership.

The web site allows access to past "Lake Tides" issues, the UW Extension bookstore, and a resources link to "shoreland and shallows" that contains detail information that can help you with your project such as erosion control, rain garden plans and plantings, landscaping and maintenance tips. So whether you are just in the planning stage or are ready to start, I would encourage you to check out this web site.

***Rich Hokanson***  
***Island Restoration Chairperson***







BALSAM, RED CEDAR & HEMLOCK LAKES  
*Preserve and Protect for the Future*

P.O.Box 2148  
Mikana, WI 54857  
Address Services Requested

Non-Profit Org.  
U.S Postage  
PAID  
Eau Claire, WI  
Permit #1557



***In This Issue:***

**President's Letter • Aquatic Invasive Species Committee • New Appointed Board  
Member • Nature Committee • Fish Sticks • Boater's Safety • Membership  
Coupon Books • Call for Volunteers • Shoreline & Island Restoration**